



Business fields

- ▶ hospitals (Delivery wards, puerperium, neonatal ward, prepartale, obstetrics ward)
- ▶ freelance work
- ▶ surgery
- ▶ group practice

Campus location

The city Linz with its developed infrastructure of Higher Education Institutes is a well established study location. Furthermore extensive cultural- and recreational facilities, a wide variety of gastronomic – and various residential possibilities as well as the best infrastructure offers the students an optimum study environment with high living quality.

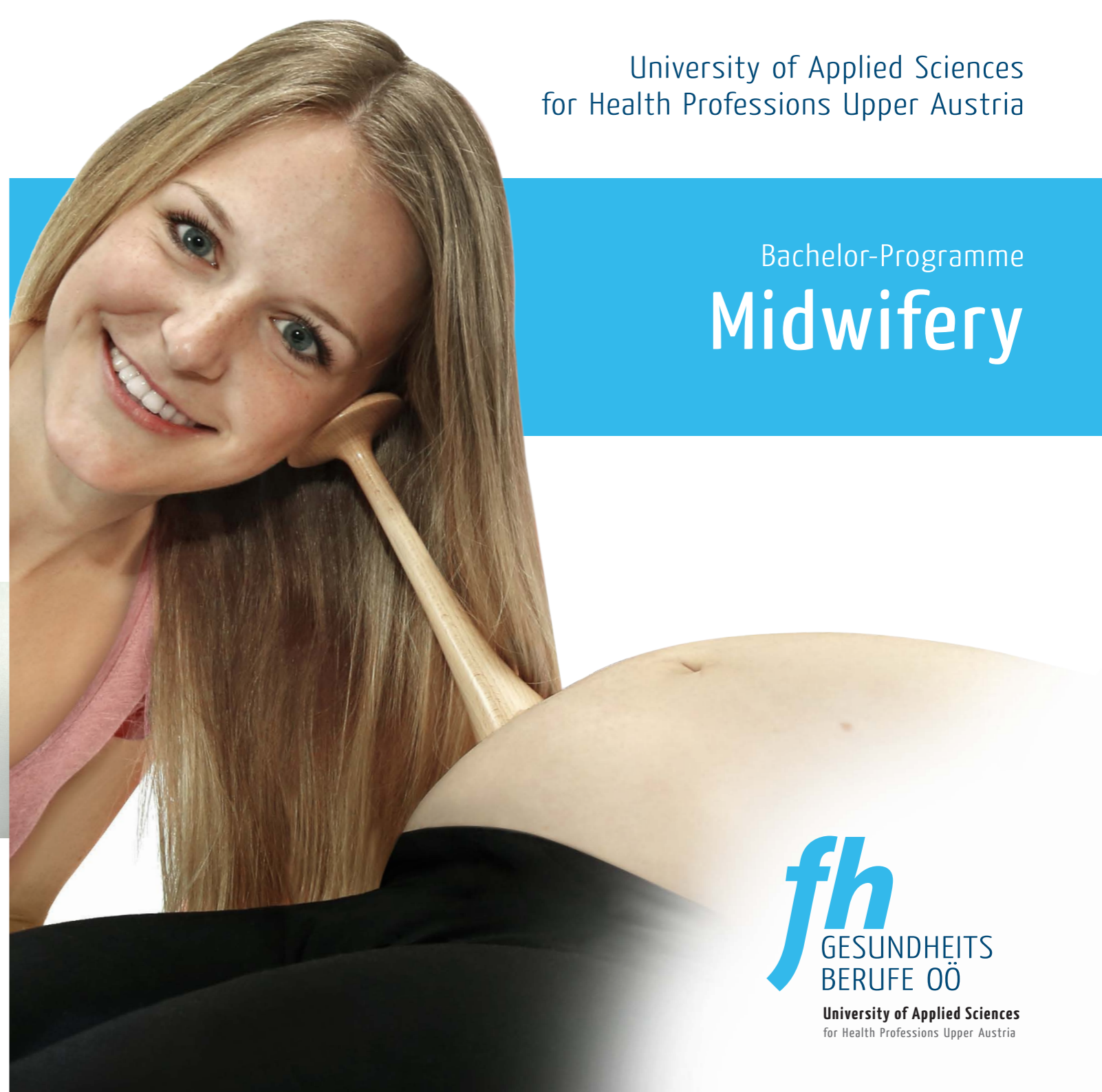


The close connection of the study programmes at the University of Applied Sciences for Health Professions in Upper Austria with the regional hospitals guarantees the successful realisation of the acquired expertise in practice.



University of Applied Sciences
for Health Professions Upper Austria

Bachelor-Programme Midwifery



University of Applied Sciences for
Health Professions Upper Austria
Med Campus VI.
Bachelor-Programme
Midwifery

Paula-Scherleitner-Weg 3
4020 Linz, AUSTRIA

Contact: Phone: +43 (0)50 344/24000; E-Mail: Hebamme@fhgooe.ac.at;
www.fh-gesundheitsberufe.at



issue 2019



University of Applied Sciences
for Health Professions Upper Austria

"I especially appreciate the fact that the Bachelor Programme Midwifery does not only provide professional and methodical competencies, but that we also get the opportunity to mature personally."

Anna Daucher, BSc graduate



Brief programme profile

Programme duration: **6** semesters, full-time

Med Campus VI., KUK Linz

Graduation: Bachelor of Science in Health Studies (BSc)



24/18/22 Study places per year

Study fees

Registration procedure

050 344/24000

Hebamme@fhgooe.ac.at

Requirements: general university eligibility, adequate specific secondary school vocational certificate, certificate of access to higher education, relevant professional qualifications

Bachelor-Programme Midwifery

Midwifery encompasses care of women during pregnancy, labour, and the postpartum period, as well as care of the newborn. (WHO)

Programme

In the Midwifery Bachelor study programme the students acquire all the professional-methodological, socio-communicative and scientific expertise, which are necessary for working in the field of midwifery. These skills are taught within the framework of a scientifically based education together with practical training at the University of Applied Sciences, Upper Austria and at the work placements.

As well as expertise in technical methodology, the students acquire socio-communicative skills such as conflict management, the ability of self-reflection, capacity for teamwork, role distance etc. Furthermore they learn the fundamental concepts of scientific work. In the accompanying internship the student is offered the opportunity to realise and to intensify the acquired know how under expert guidance.

The study programme is divided into modules, which are partly offered on an inter-disciplinary basis. The curriculum is characterised by a balance between in-depth theoretical education, science and work experience. Graduates of the study programme are in a position, to expertly carry out the allocated tasks, while combining the know how from the various disciplines. They have learned to act reflectively and autonomously in their professional daily routine and to act in accordance with their code of conduct.

Module Plan

Competences: Professional Methodical Competences Professional Competences Scientific Competences Social Communication and Personal Competences

Semester 1	
Midwife Science 1	HEB 1
General Medical Basics	AMG
Basics for Medical Midwifery 1	SMG 1
Communication and Cooperation	KUK
Professional Placement 1	BPR 1

Semester 2	
Midwife Science 2	HEB 2
Medical Basics for Midwifery 2	SMG 2
Basics of Scientific Skills 1	GWA 1
Professional Placement 2	BPR 2

Semester 3	
Midwife Science 3	HEB 3
Medical Basics for Midwifery 3	SMG 3
Basics of Health Professionals	GGB
Human and Social Sciences 1	HSW 1
Professional Placement 3	BPR 3

Semester 4	
Midwife Science 4	HEB 4
Basics of Scientific Skills 2	GWA 2
Professional Placement 4	BPR 4

Semester 5	
Midwife Science 5	HEB 5
Human and Social Sciences 2	HSW 2
Basics of Scientific Skills 3	GWA 3
Professional Placement 5	BPR 5

Semester 6	
Midwife Science 6	HEB 6
Management in the Health Sector	MIG
Elective Module 1 – Personal Competences	SEK
Elective Module 2 – Social Competences	SOK
Professional Placement 6	BPR 6

Job description

Midwives work as a partner with women and ensure they receive the necessary support, care and advice during the pregnancy and birth as well as during the puerperium. They manage the birth autonomously and offer the new born and/or the baby care. The work of the midwives includes preventative measures, the support of the normal birth, the recognition of complications for mother and child, the guarantee of all the necessary medical treatment or other appropriate support as well as the execution of emergency measures.



The midwife accepts an important task in the health protection for the women she is looking after, but also within the family and society. This work includes, for example, the fields of family planning, parenthood, recovery, development of the child and breastfeeding.

Possibilities of further education

The completion of this Bachelor Programme entitles the graduate to participate in professional, but also in management or pedagogical Master Programmes in the field of the health professions. It is also possible to do further master and doctorate studies in Austria or abroad.

